

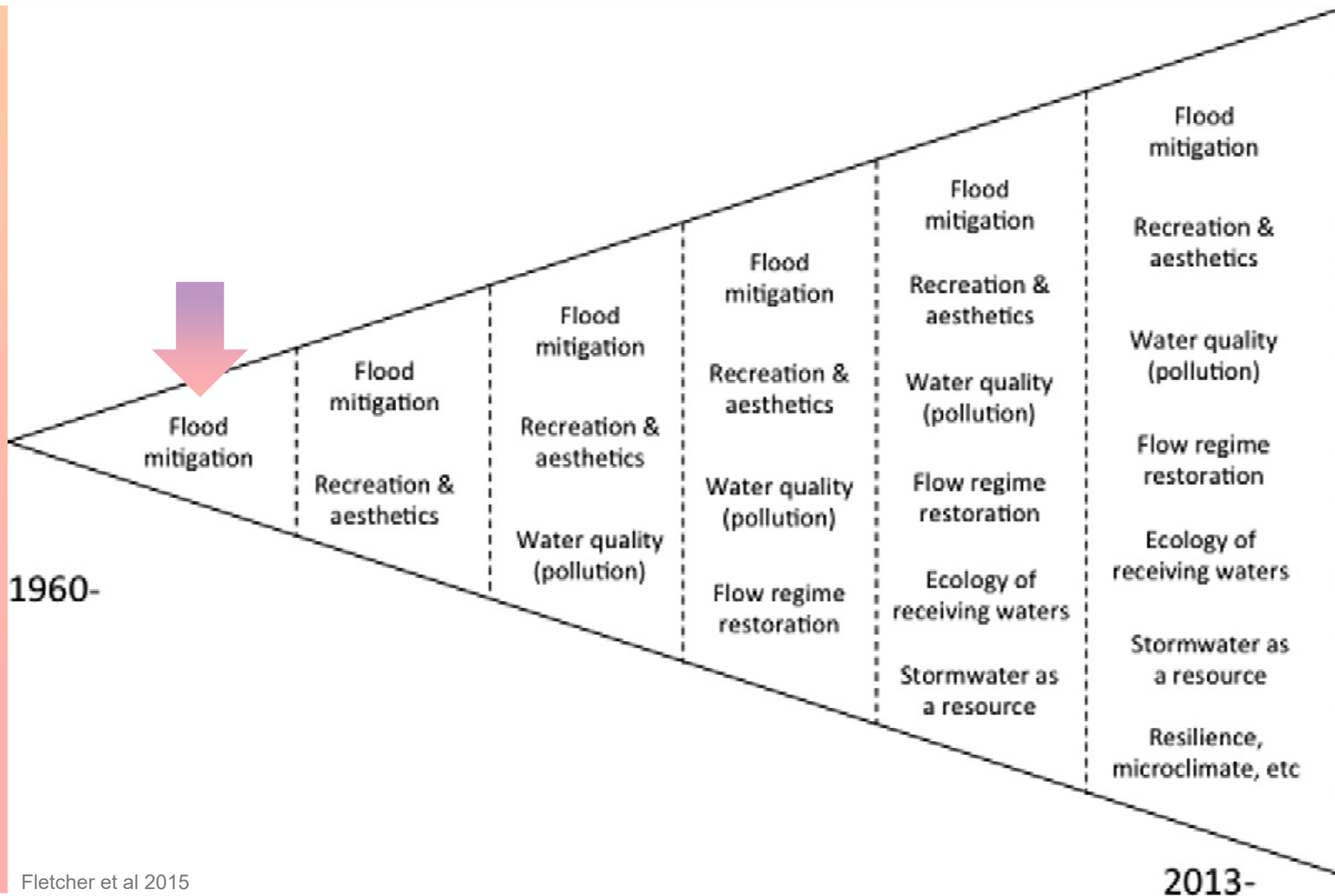
**A PICO
Production**

The Road to Institutionalizing Green Infrastructure

EPA: GI in HMP

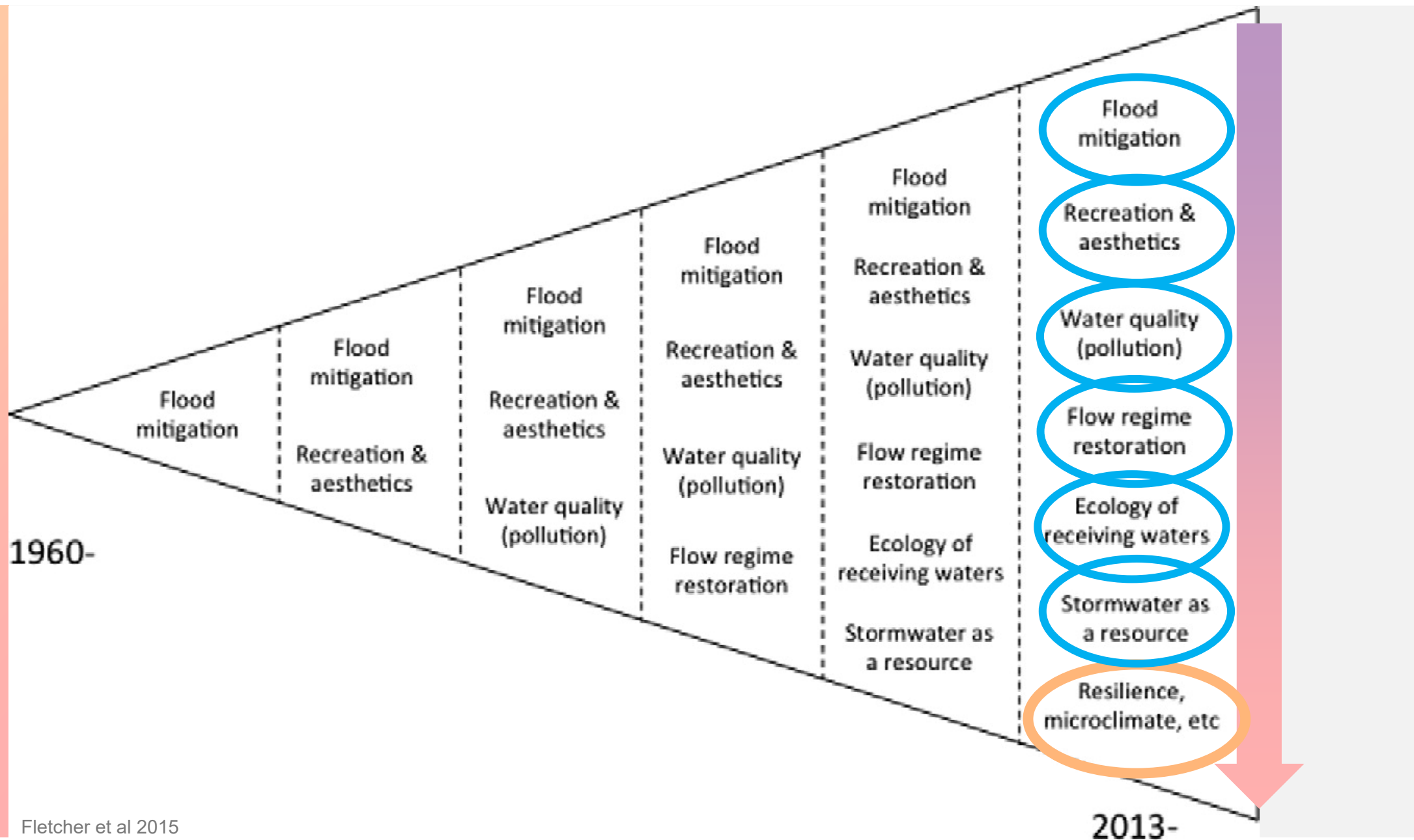
Tempe Center for the Arts | 12.10.2019

WHAT IS GREEN INFRASTRUCTURE



Fletcher et al 2015

WHAT IS GREEN INFRASTRUCTURE



Fletcher et al 2015

The Story (aka: history , HOW, it came about in Tucson/Pima Co.)



Residential

Recognizing rainfall is a resource in desert communities



Grassroots

Residents (aka Brad Lancaster) wildcatting curb cuts



The Engineers

Lesson learned:
Engineers prefer to talk to engineers



Standards

Institutionalizing practice: permitting, design standards, inspections

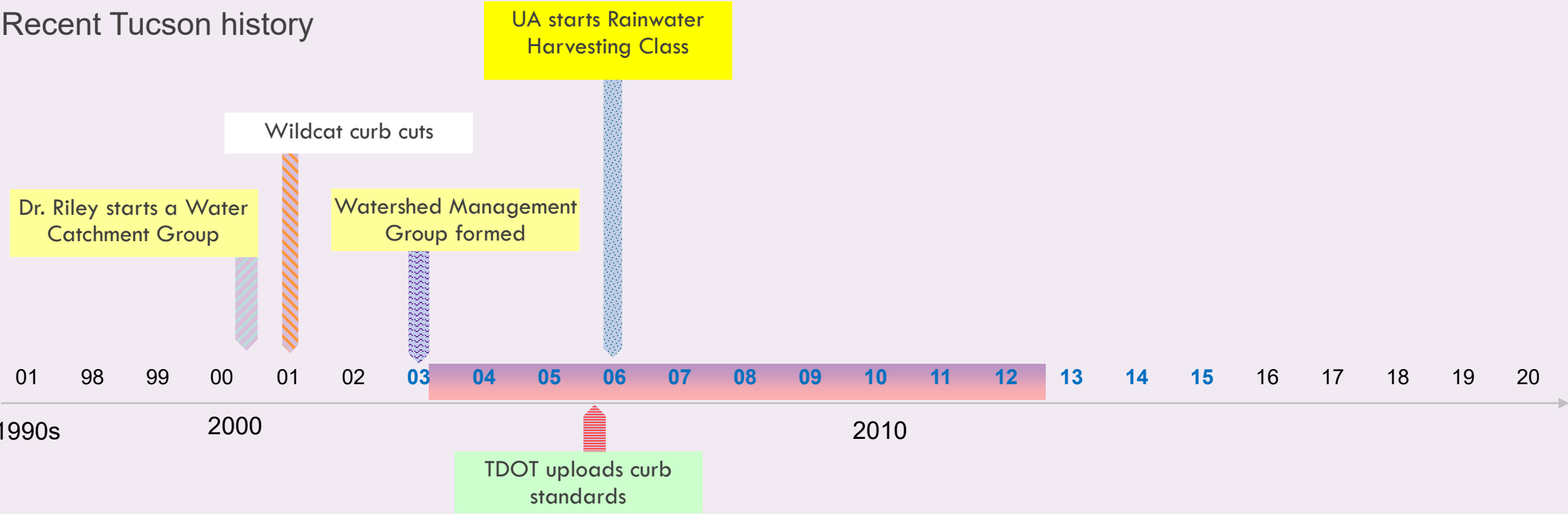


Directives

Required on all new and redevelopment projects (designers and contractors need to follow transportation directives)

Timeline:

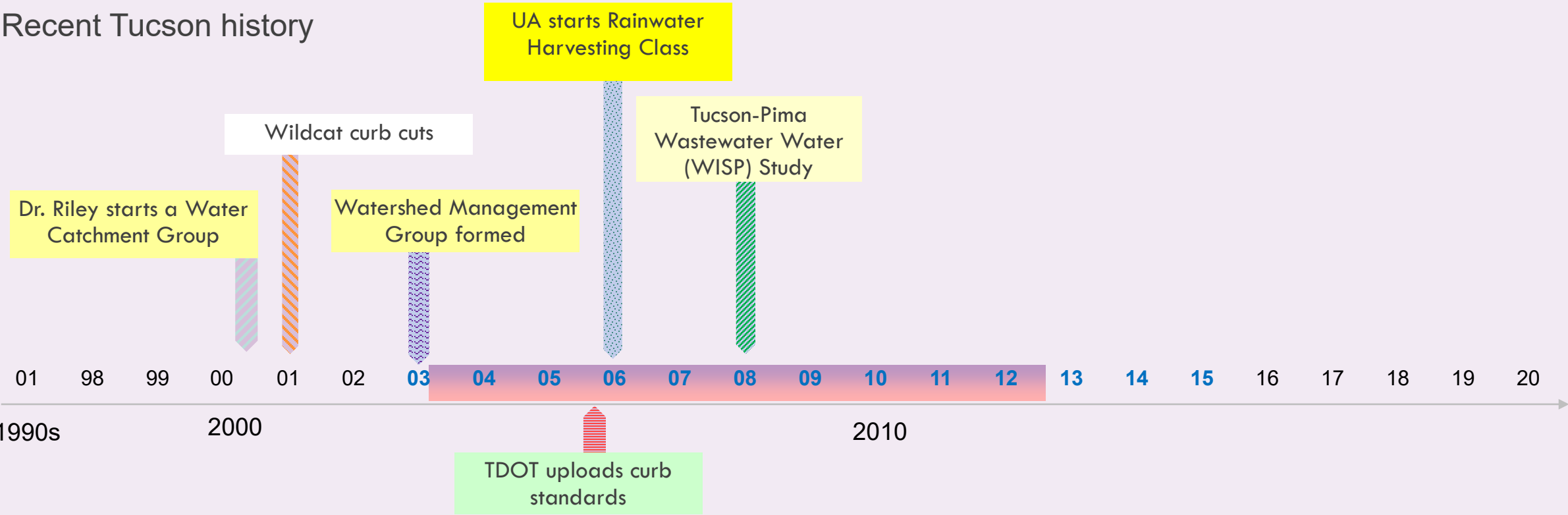
Recent Tucson history



Institutionalizing in City of Tucson/Pima County

Timeline

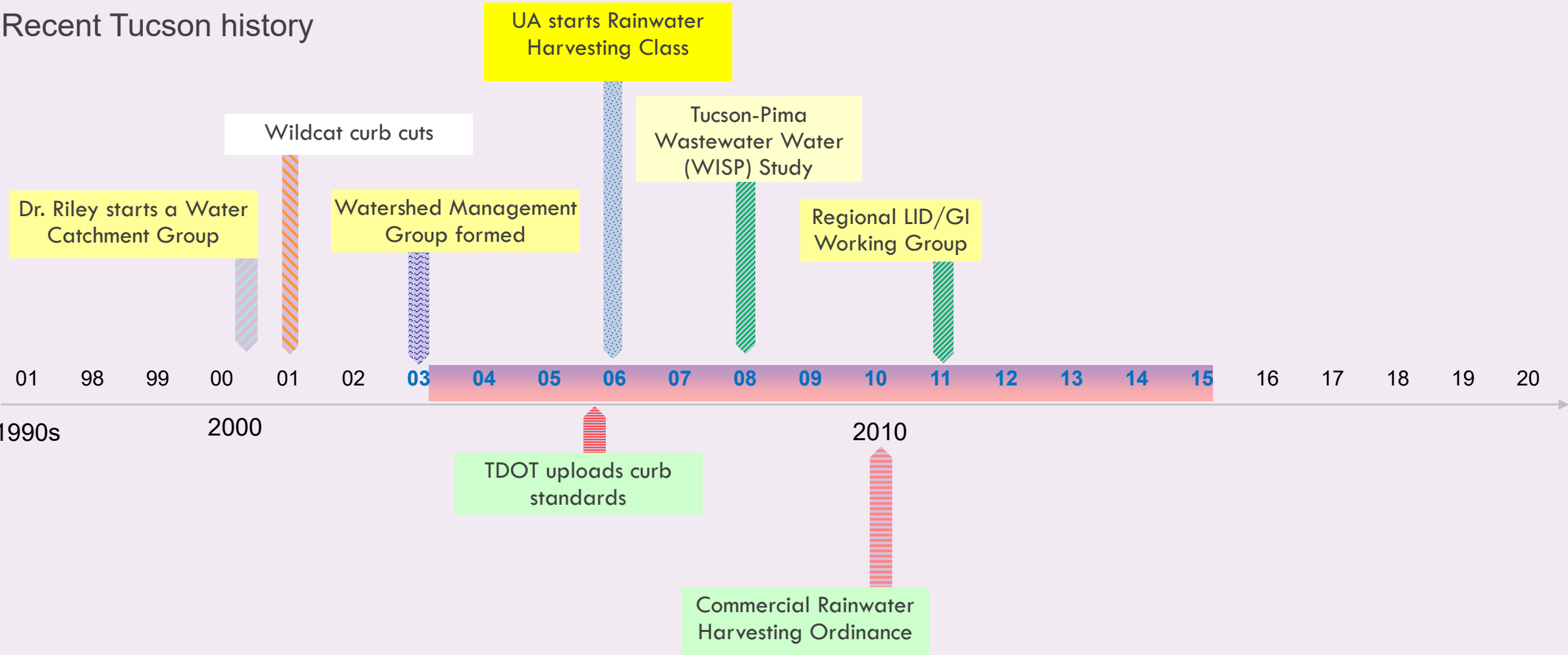
Recent Tucson history



Institutionalizing in City of Tucson/Pima County

Timeline

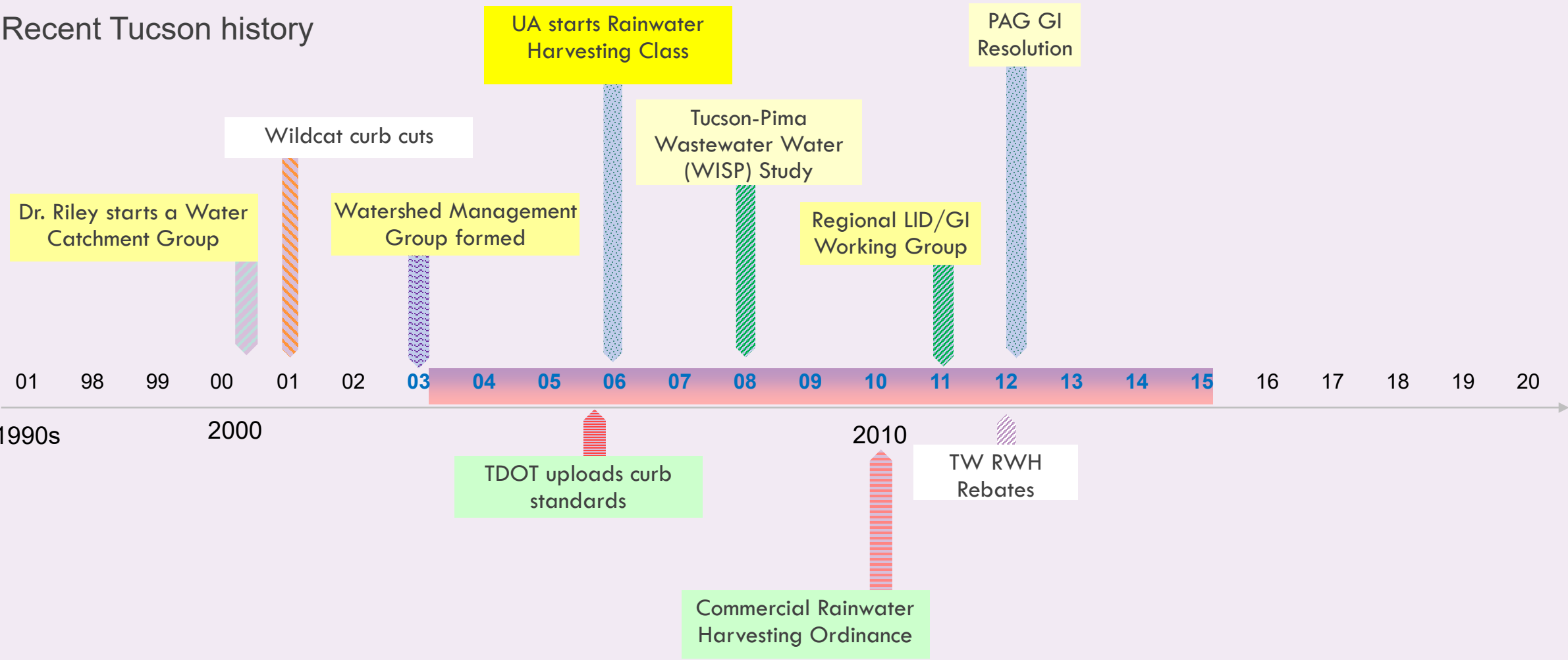
Recent Tucson history



Institutionalizing in City of Tucson/Pima County

Timeline

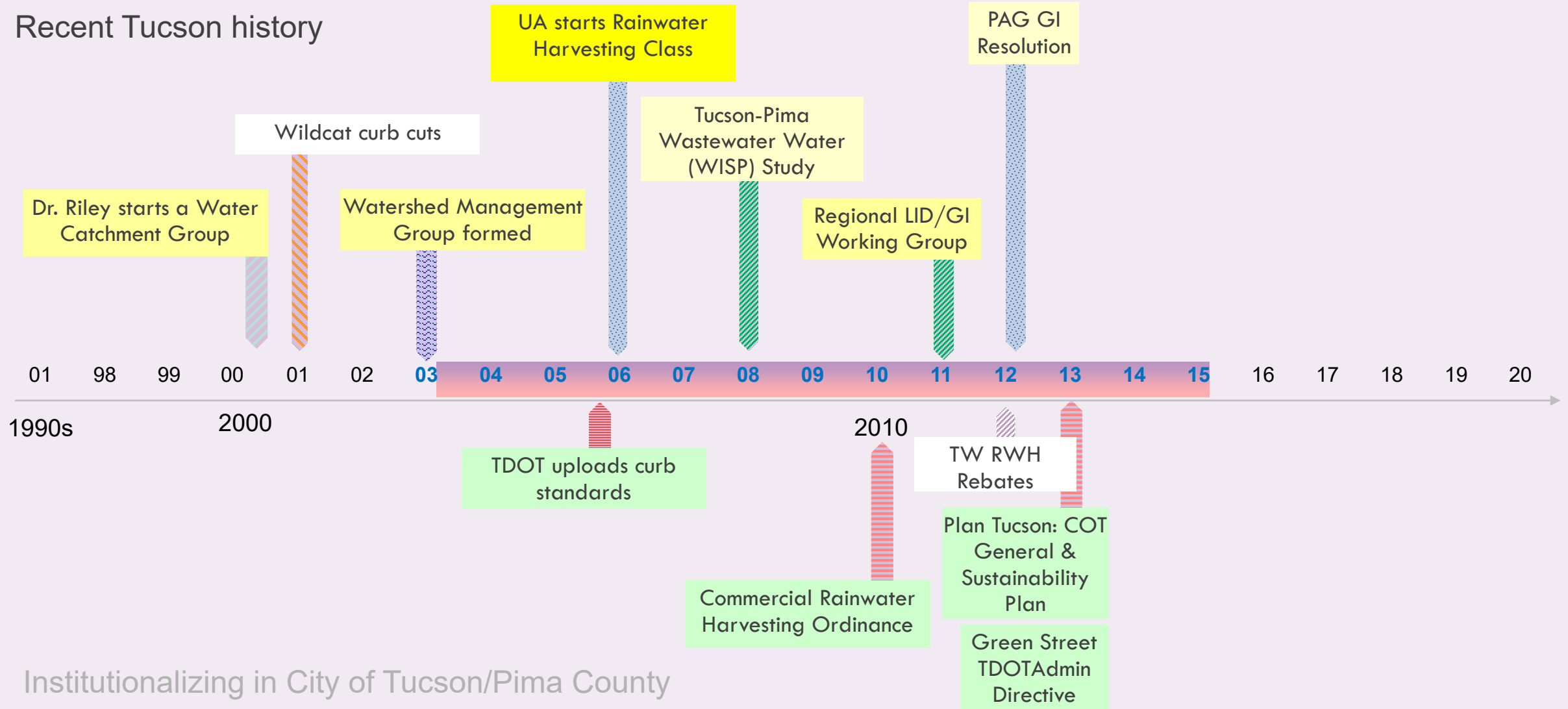
Recent Tucson history



Institutionalizing in City of Tucson/Pima County

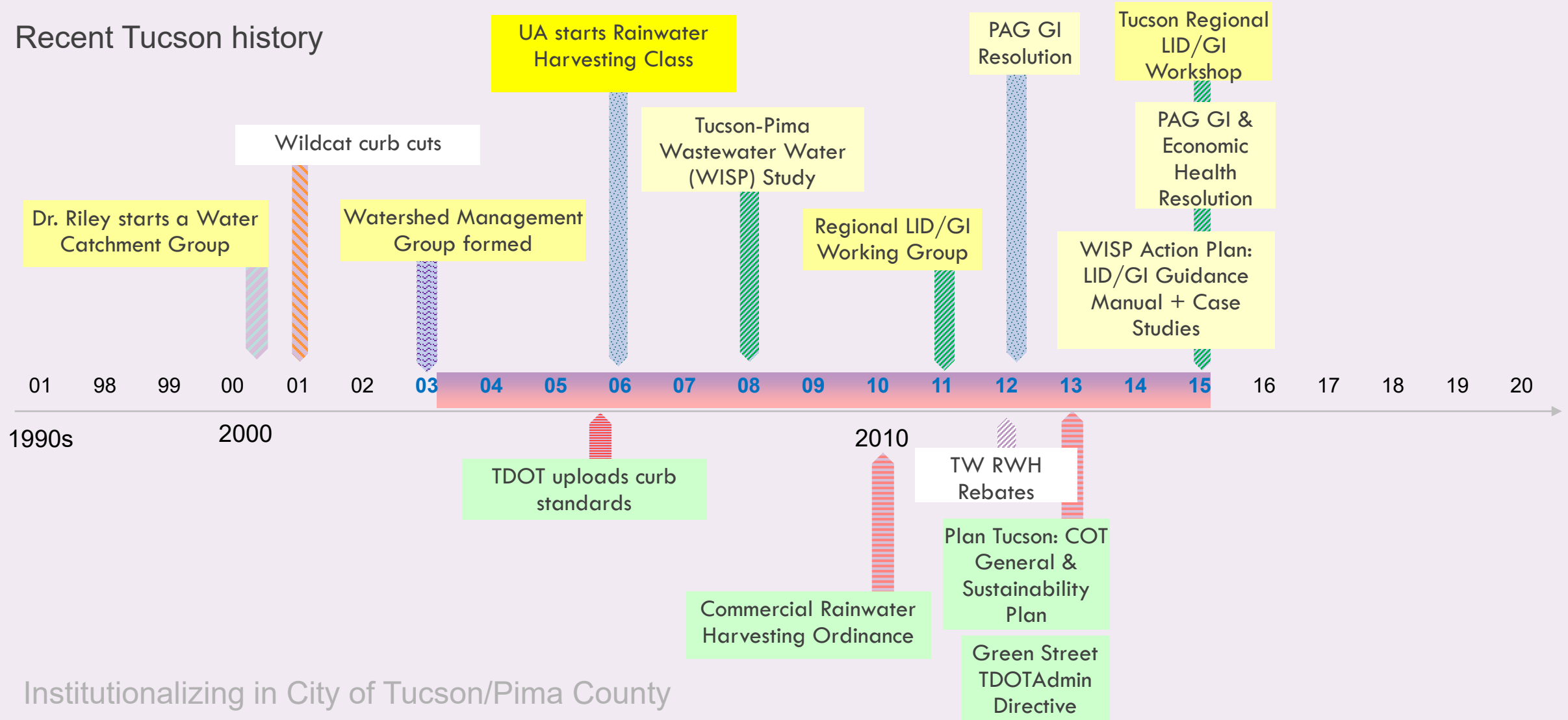
Timeline

Recent Tucson history



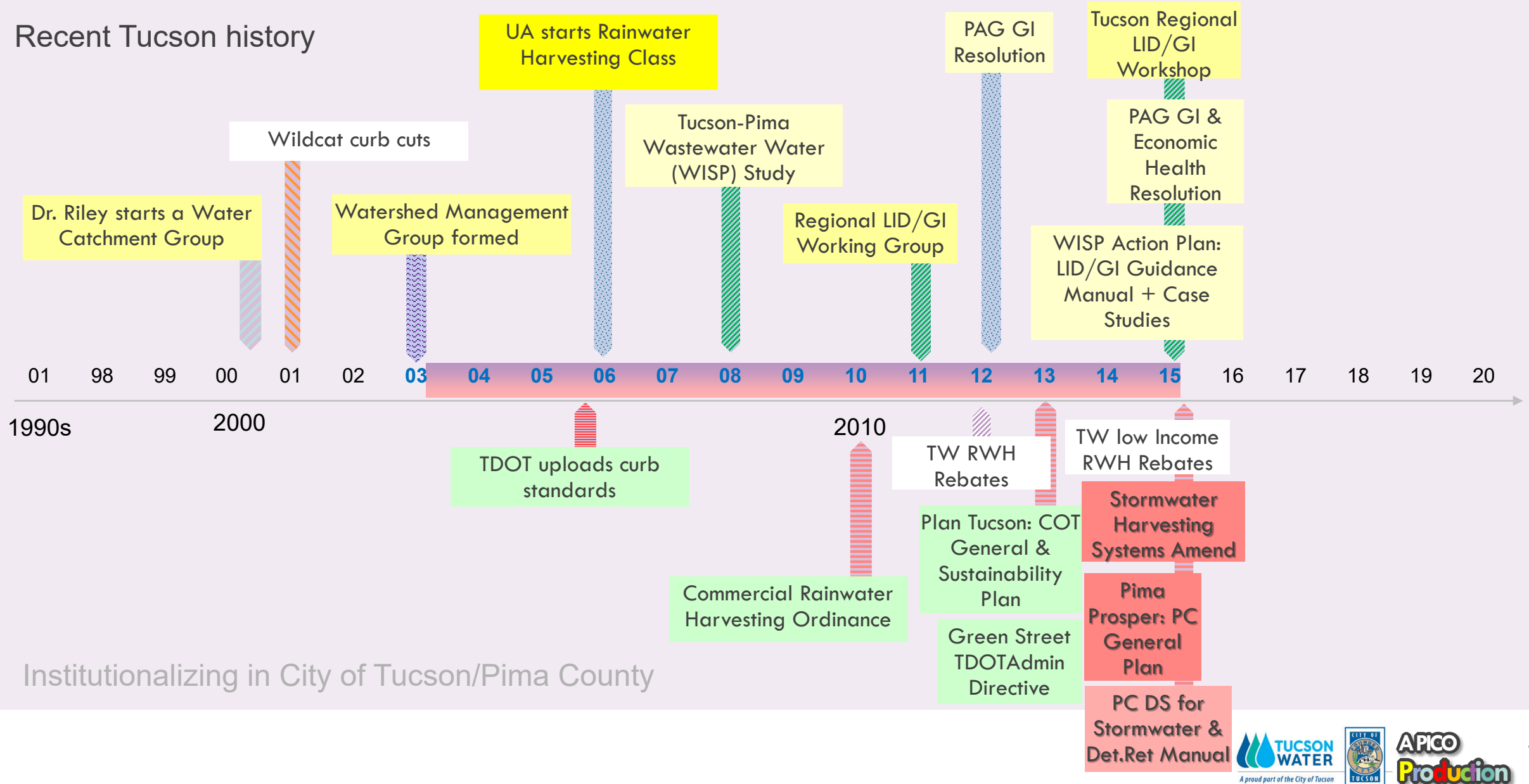
Timeline

Recent Tucson history



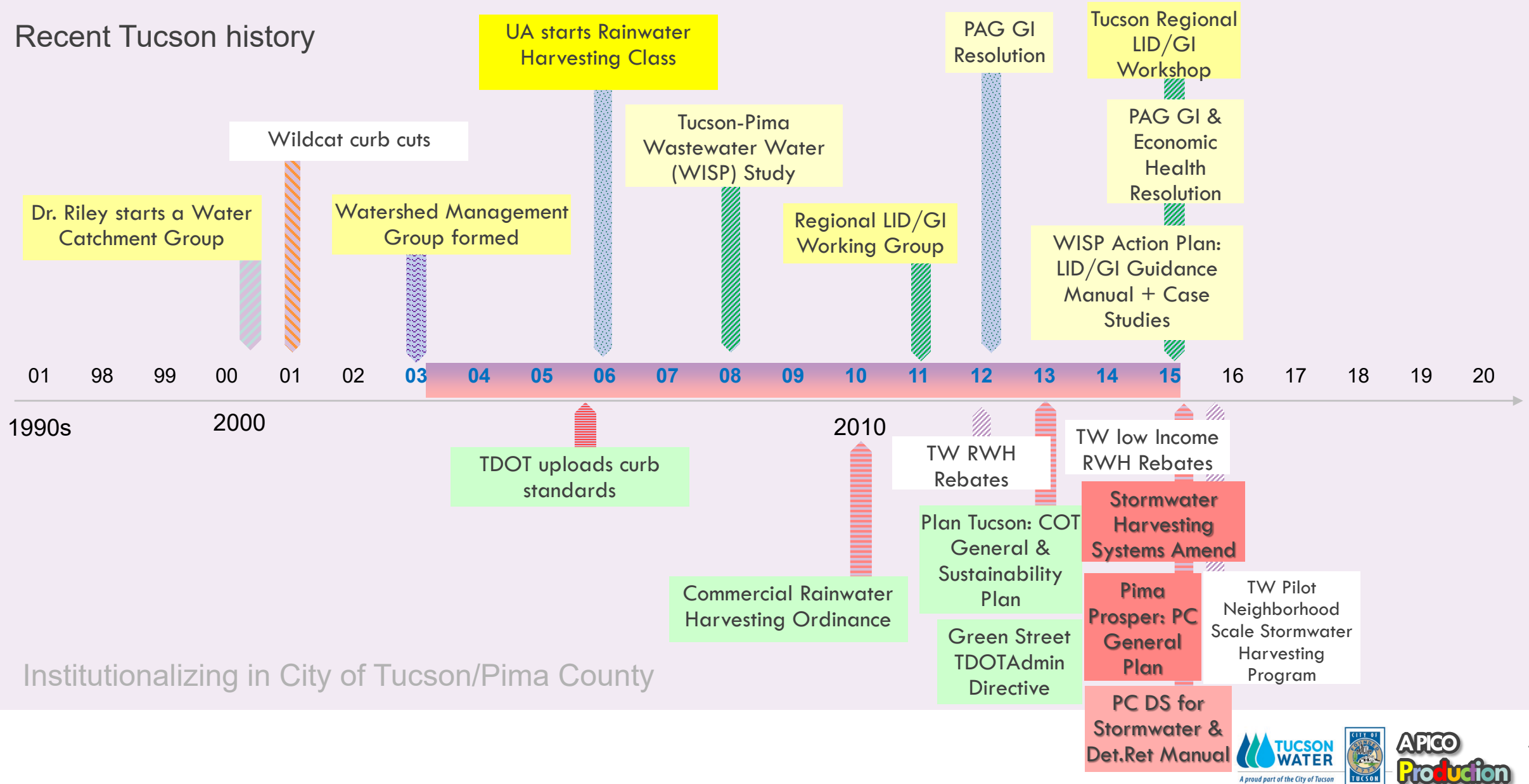
Timeline

Recent Tucson history



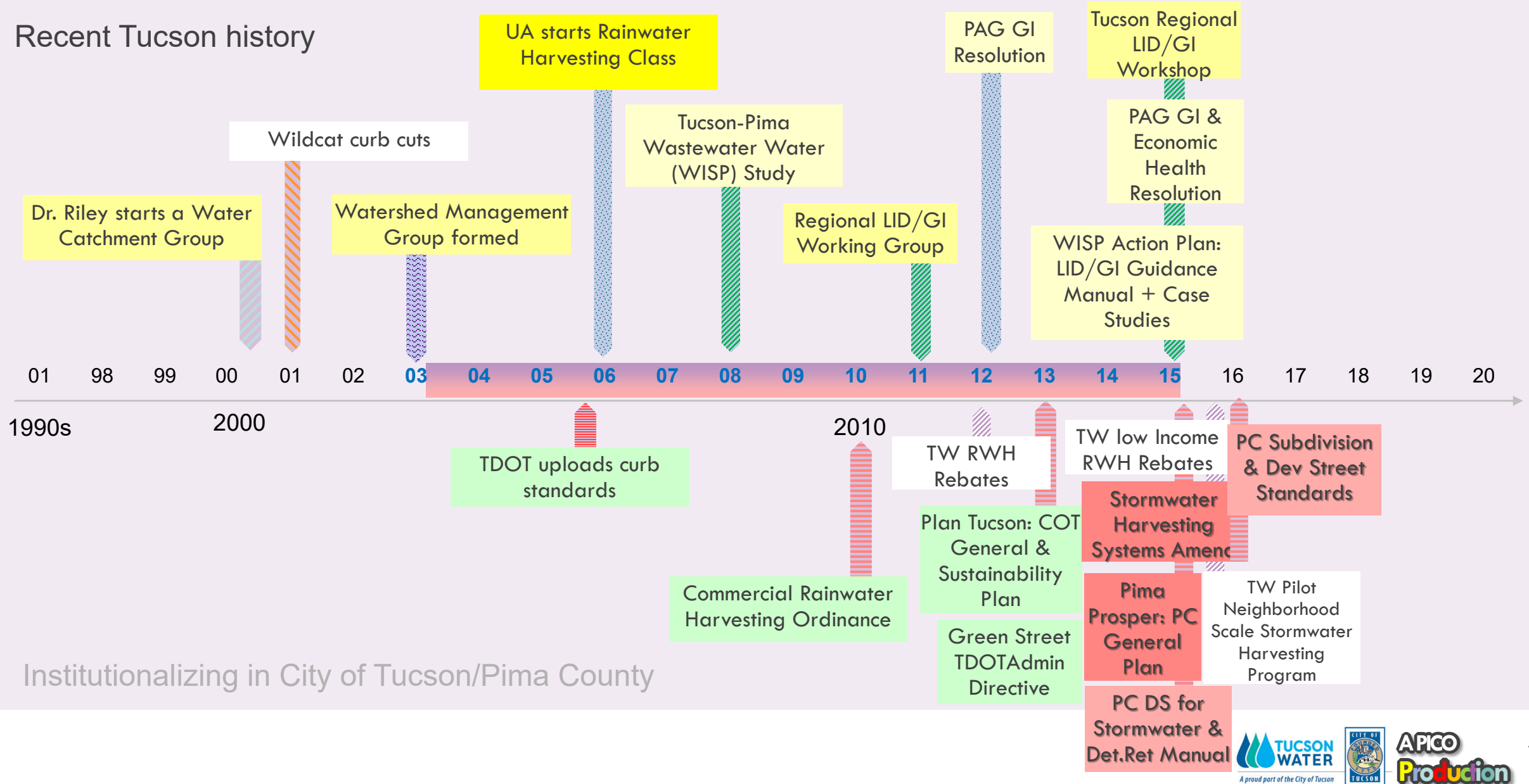
Timeline

Recent Tucson history



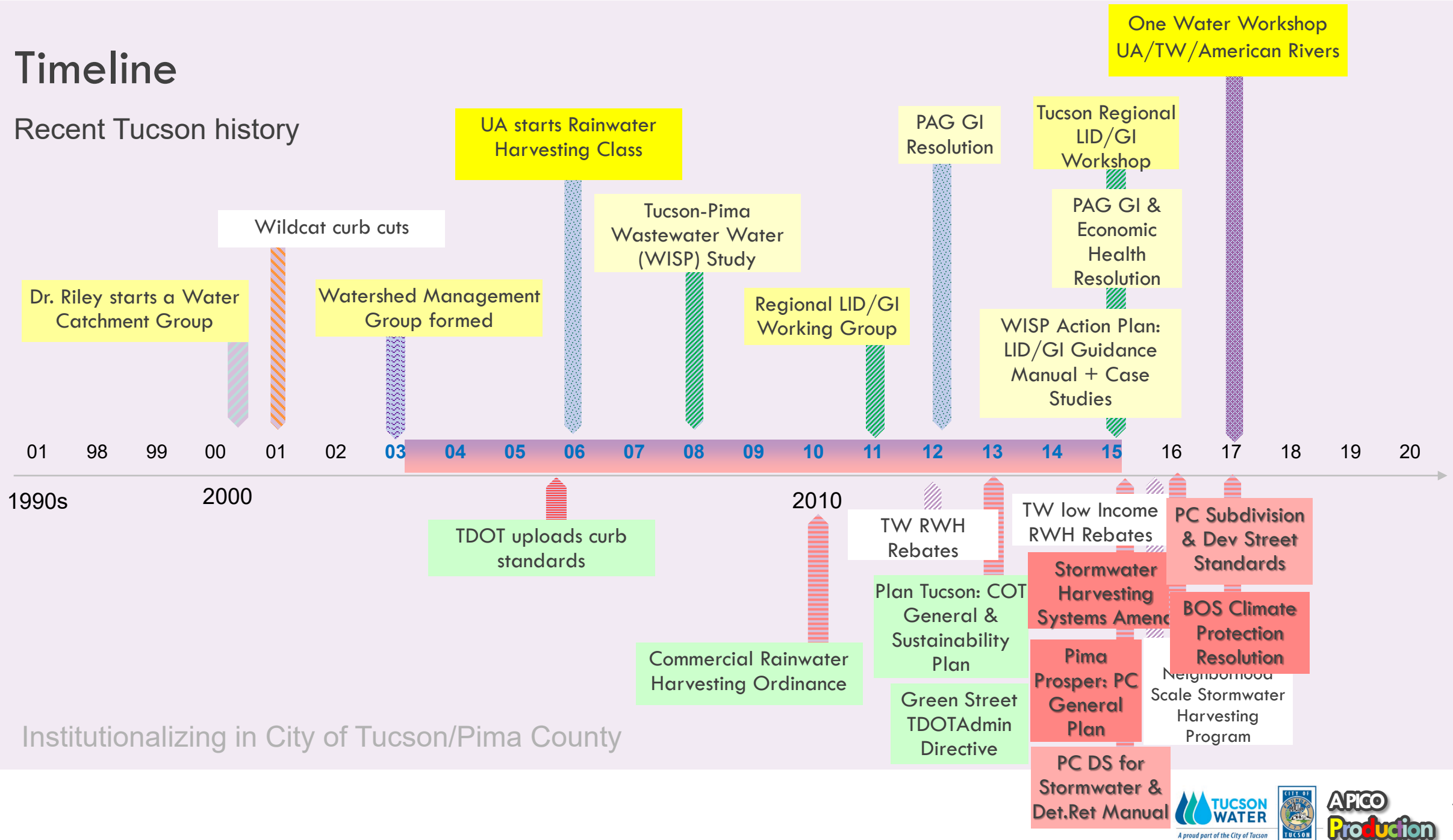
Timeline

Recent Tucson history



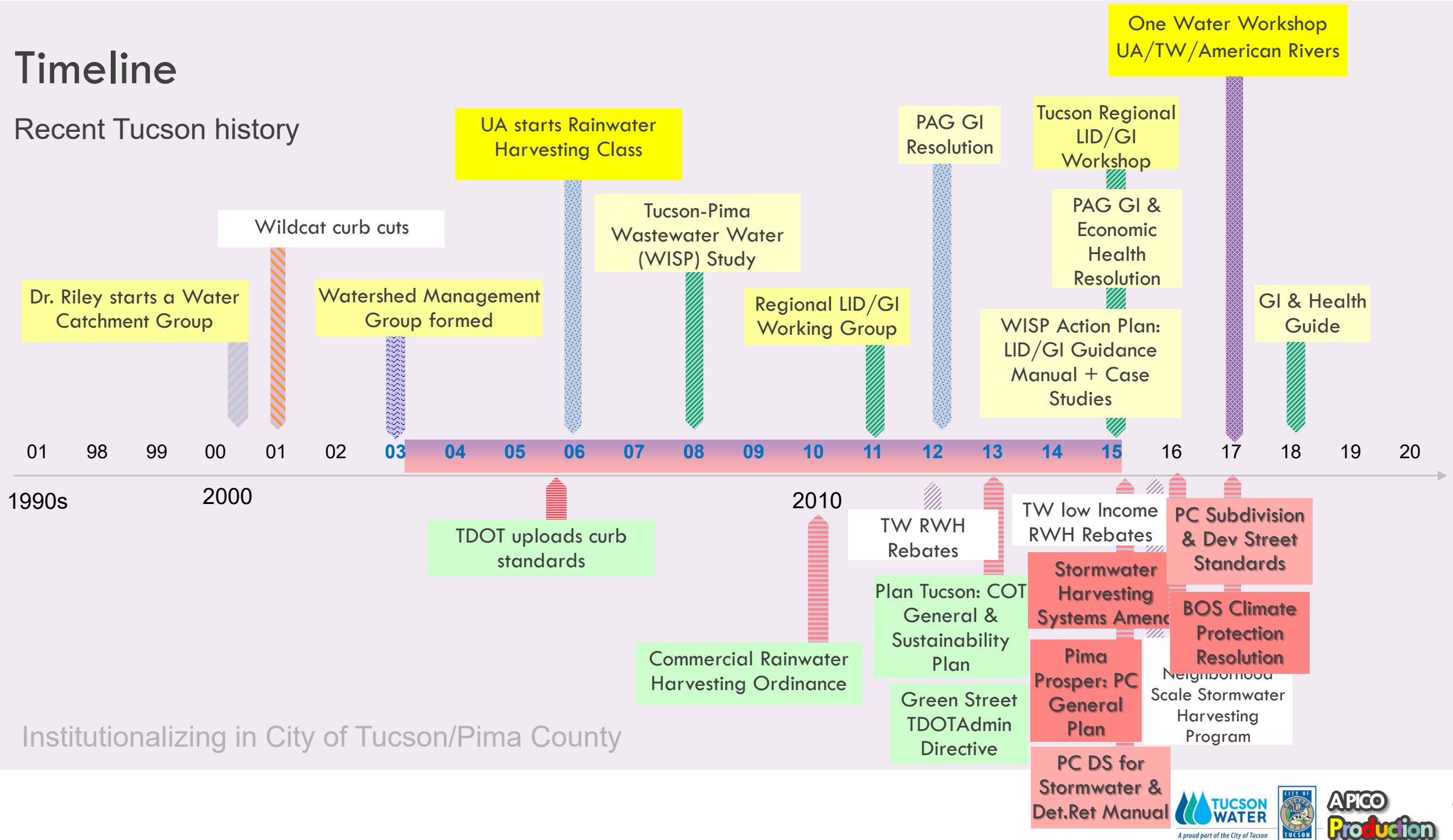
Timeline

Recent Tucson history



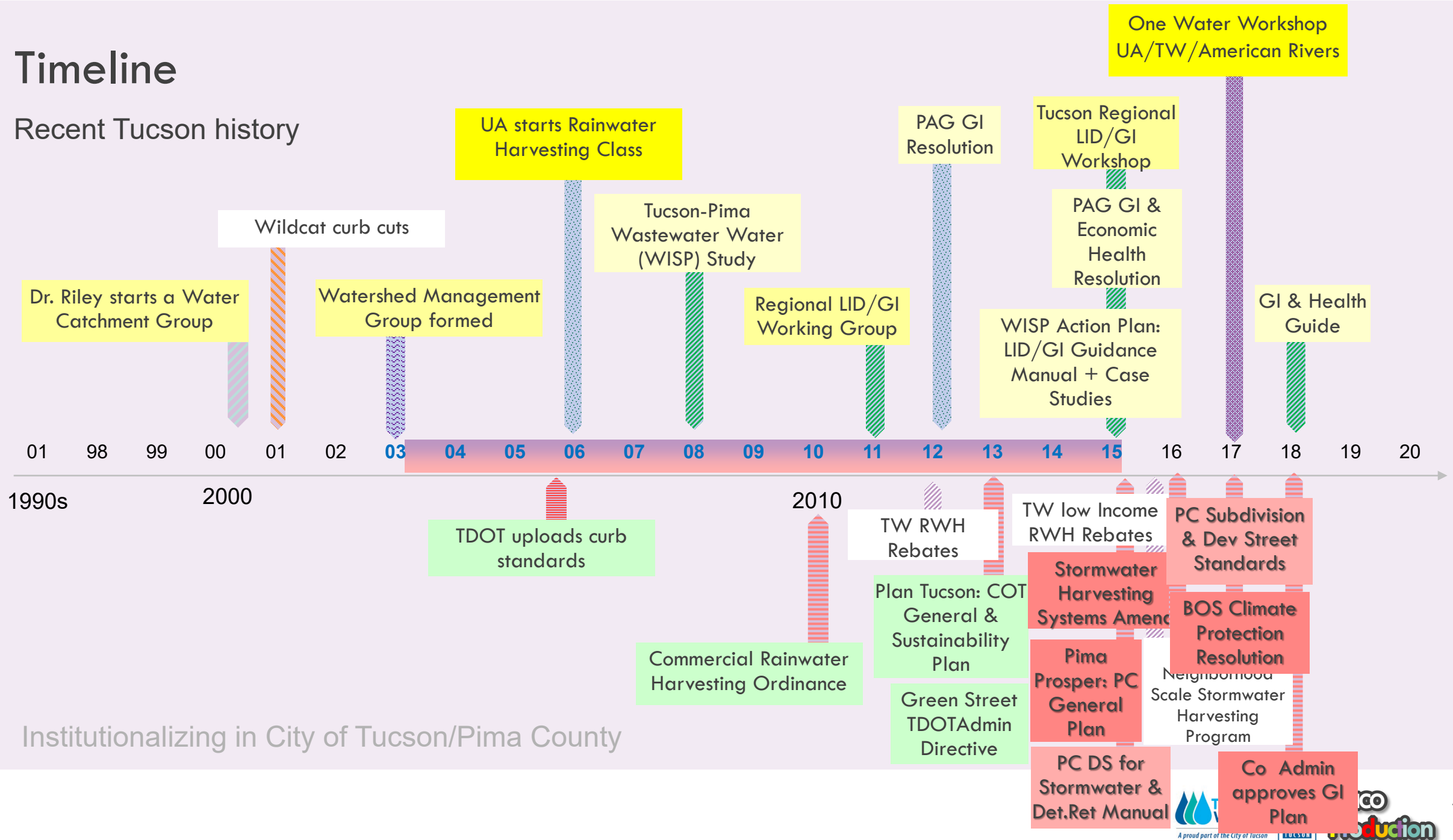
Timeline

Recent Tucson history



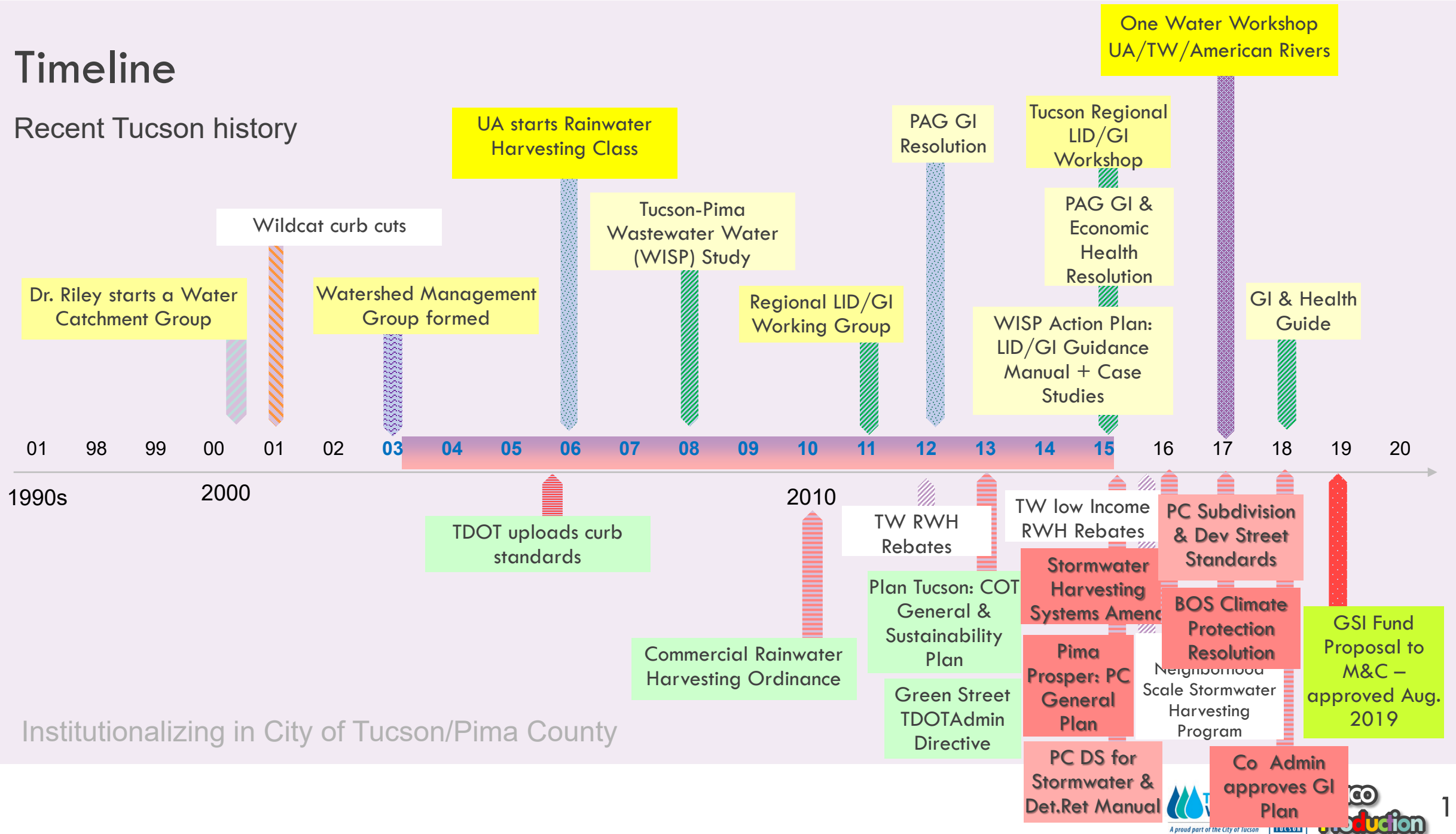
Timeline

Recent Tucson history



Timeline

Recent Tucson history





Stormwater a Resource

Social as well
as Physical
value of water
recognized



WHY IMPLEMENT GSI



Stormwater a Resource

Social as well
as Physical
value of water
recognized



Health

Environmental,
wildlife and
human health



Stormwater a Resource

Social as well
as Physical
value of water
recognized



Health

Environmental,
wildlife and
human health



Community Resilience

Changing
climatic
demands
placing new
stressors on
city form and
development
(equity)

WHY IMPLEMENT GSI

Partners, Collaborators



City of Tucson

Tucson Water

PDSD

TDOT

Parks & Rec



Pima County

RFCD

Office of
Sustainability

Public Health



Pima Association of Government

Sustainability

Economic Vitality



Universities

Univ. of AZ:
SWES

Inst of Environ
Hydrology
Engineering
CAPLA

Facilities

ASU:
Wrigley Instit.
SSEBE



NGO

WMG Grp

Tucson Clean &
Beautiful

Living Streets
Alliance

Community Food
Bank

SERI



Others

EPA

GI Leadership
Network

USDN

WAA

- **Green Infrastructure and Health Guide:**
http://willamettepartnership.org/wp-content/uploads/2018/07/Green-Infrastructure_final_7_12_18_sm.pdf
- **Rainwater Harvesting Ordinance:**<http://www.tucsonaz.gov/ocsd/sustainability/water/rainwaterharvesting.php>
- **Tucson Department of Transportation Green Street Active Practice Guideline:**http://cms3.tucsonaz.gov/files/transportation/Green_Streets_APG_Signed_by_Director.pdf
- **Low Impact Development/Green Infrastructure Guidance Manual:**
http://webcms.pima.gov/UserFiles/Servers/Server_6/File/Government/Flood%20Control/Floodplain%20Management/Low%20Impact%20Development/li-gi-manual-20150311.pdf



REFERENCES

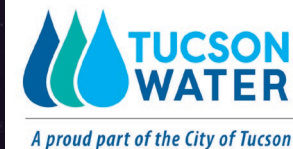


QUESTIONS

IRENE OGATA, URBAN LANDSCAPE MANAGER
PLA, CPM, ASLA, AzAPA

irene.ogata@tucsonaz.gov

PHONE: 520-837-6960



A PICO
Production